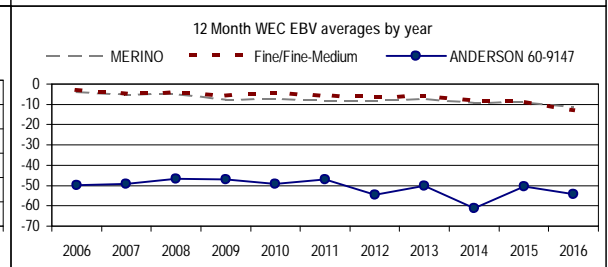
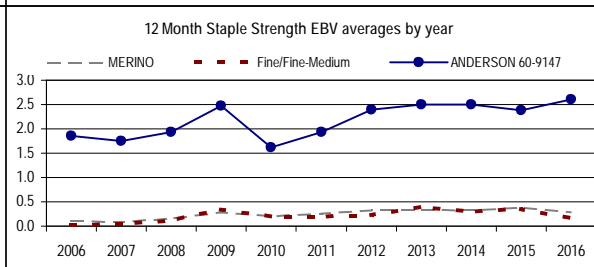
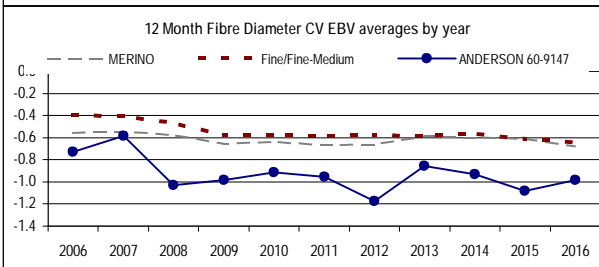
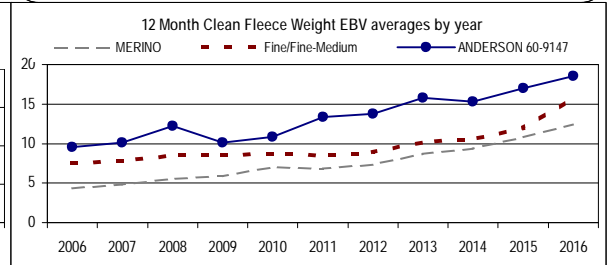
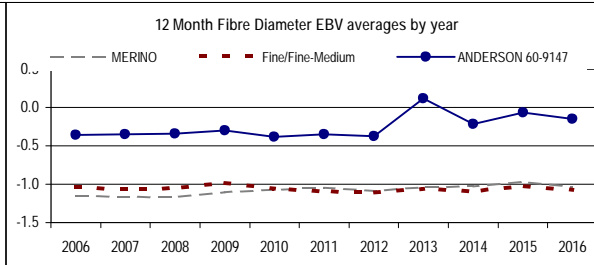
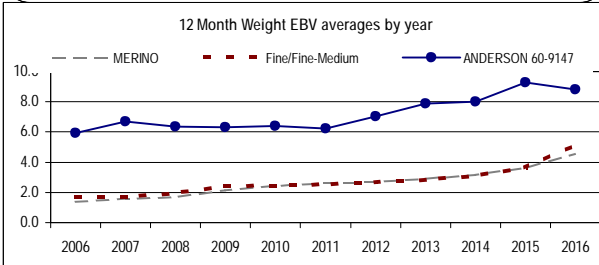
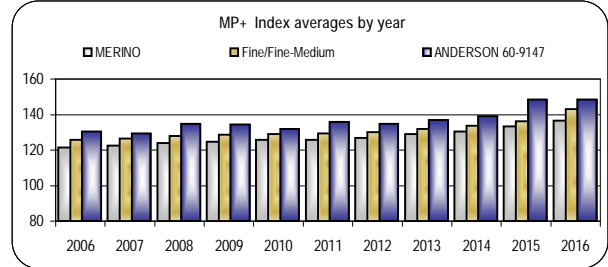
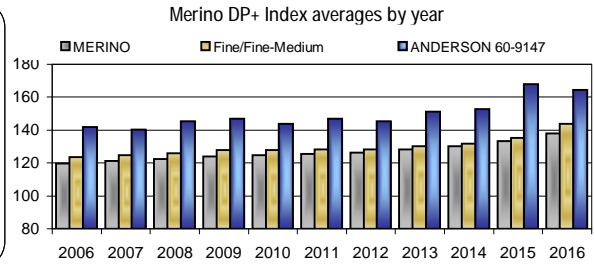
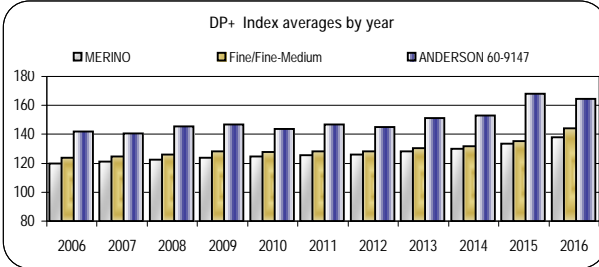


ANDERSON
LYNLEY ANDERSON
60-9147

Analysis : **MERINO**



Dated : 21-Jan-17



ANDERSON 60-9147	Merino DP+												
	Ywt	Yfd	Ycfw%	Yfcdv%	Ysl	Yss	Nlw%	Ywec%	Ywt	Yfat	Yemd	MP+	Counts
2007	6.7	-0.4	10.1	-0.6	3.5	1.8	0.0	-49	6.7	0.74	1.46	129.4	449
2008	6.4	-0.3	12.2	-1.0	5.9	1.9	1.2	-47	6.4	0.84	1.52	134.7	407
2009	6.3	-0.3	10.1	-1.0	4.9	2.5	2.9	-47	6.3	0.78	1.58	134.3	345
2010	6.4	-0.4	10.8	-0.9	6.3	1.6	1.5	-49	6.4	0.95	1.55	132.0	491
2011	6.2	-0.3	13.4	-1.0	5.8	1.9	1.0	-47	6.2	0.87	1.63	135.9	453
2012	7.0	-0.4	13.7	-1.2	6.9	2.4	-0.7	-55	7.0	1.03	1.78	134.6	511
2013	7.9	0.1	15.8	-0.9	5.5	2.5	1.2	-50	7.9	1.05	1.88	136.8	438
2014	8.0	-0.2	15.3	-0.9	7.8	2.5	1.7	-61	8.0	1.14	1.88	139.0	472
2015	9.3	-0.1	17.0	-1.1	7.0	2.4	5.8	-50	9.3	1.21	2.13	148.5	475
2016	8.8	-0.1	18.5	-1.0	7.9	2.6	4.1	-54	8.8	1.13	1.93	148.3	612



Linkage	
Fleece	Yes
Wls	Yes
Carcase	Yes
Wec	Yes
Reproduction	Yes

Reports are prepared using data supplied by breeders and/or accredited operators. We cannot guarantee the accuracy of this data. ASBV's are designed to estimate genetic merit of animals from the data supplied. The reports are provided to assist breeders but no liability is accepted for the outcome resulting from the use of this information.